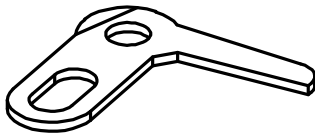
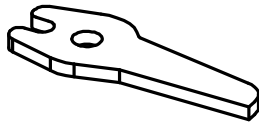


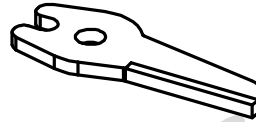
5400 - UPPER ( TENSION ) SCISSORS RAS



○ ○ 5401



○ ○ 5402

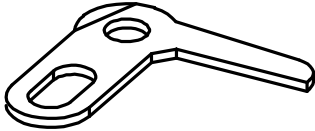


● 5404

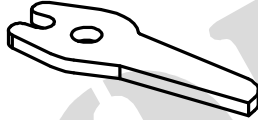


● 5403

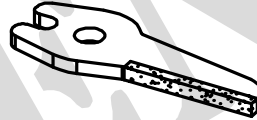
5430 - UPPER ( TENSION ) SCISSORS ESPERO 14699.0750.1/0



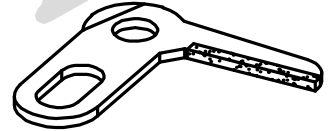
○ ○ 5431  
16020 0724 3/0  
(OLD>AS-0421-16)



○ ○ 5432  
16020 0723 3/0  
(OLD>AS-0421-15)



● 5434



● 5433

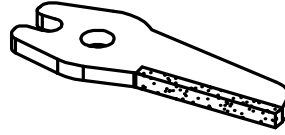
5440 - UPPER ( TENSION ) SCISSORS ORION



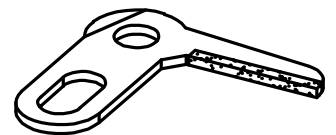
○ 5441  
16810.0704.0/0  
(OLD>AS-4250-10)



○ 5442  
16810.0705.0/0  
(OLD>AS-4250-9)

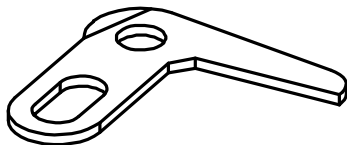


● 5444

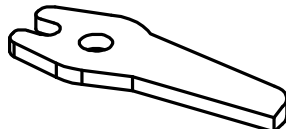


● 5443

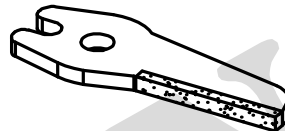
5500 - UPPER ( TENSION ) SCISSORS POLAR



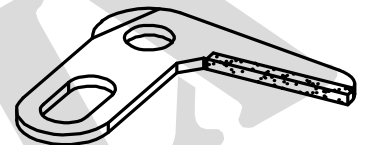
○ 5501  
16020-1126-0-0.



○ 5502  
16020-1125-0-0.



● 5503



● 5504

MATERIAL CODE : ● SOLID CARBIDE , ○ HSS , ● BRAZED CARBIDE , ◎ TIN COATED